

www.foodpolis.kr

Mecca of the world's

food industry located in Korea!

Seek and build a successful future with

the Korea National Food Cluster.

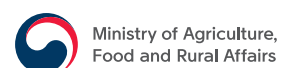
Korea's Only City Dedicated
to the Food Industry

Korea National Food Cluster



 **FOODPOLIS** For Inquiries : **1688-8782**
KOREA NATIONAL FOOD CLUSTER

 **LH** For Inquiries : **063-230-6103,6**
KOREA LAND & HOUSING CORPORATION



The Korea National Food Cluster,
Asia's first industrial complex dedicated to food,
is expected to reach KRW 15 trillion in sales by 2020.

ALL IN
on the Food Industry
ZOOM IN
on the Possibilities



The Korea National Food Cluster is emerging as the center of global attention.

HOT ISSUE
& GLOBAL
NEWS

The Munhwa Ilbo January 27, 2014

A Hub of the Global Food Industry Is Being Fostered To Advance into the World Market worth USD 6 Trillion

The Korea National Food Cluster-FOODPOLIS is being created in Iksan, Jeollabuk-do, which is expected to bolster Korea into one of the world's power players in the food industry. In accordance with the statistics from the UN, the world's population, which stands at 7.2 billion as of late 2013, will reach 8 billion by 2025, and demand for food will grow in proportion. The size of the world's food market (USD 6.4 trillion by 2020. This figure market (USD 1.6 trillion) and the IT market (USD 1.6 trillion). This is the reason why many advanced nations are looking at the food industry as a new future growth engine. The level and aging population in Asian countries are expected to be formed, in particular, as the world's food market will be the axis of the world's economic advancement of China and soon account for 40% of the world food market. Working as favorable factors for Korean food

Edaily June 30, 2014

Chinese and Japanese companies are continuously seeking the chance to join the Korea National Food Cluster-FOODPOLIS

The Chinese food companies are having their products made in Korea (with "Made in Korea" marked on each label) and having them re-exported to China. FTAs concluded with large economic blocs such as the US and EU are advantageous to Korea as well. Japanese food companies, which have undergone many ordeals since the longed weakening of Japanese yen and competitiveness of their products is another advancement into Korea. Korea's financial are advanced than China and Southeast Asia. Japan's leading attraction for them, Jaxx - Japan's leading trading company - is planning to establish a facility in Korea using locally produced ingredients around the world. In addition, Jaxx has a facility dedicated to the study of producing food, established in 1900, also plans to use it for its food service business.

Maeil Business Newspaper September 15, 2013

Korea National Food Cluster - a Platform of the Food Industry and Culture Expected to Reach KRW 15 Trillion in Sales by 2020

FOODPOLIS (Korea National Food Cluster), touted as the mecca of Korea's food industry, will open in Iksan, Jeollabuk-do in 2015. Its total area is as large as that of Yeouido in Seoul, measuring 2,320,000m². The government has set up a goal to attract 70-100 resident food companies and research institutes. In particular, Emilia-Romagna in the northeastern part of Italy has succeeded in bringing together small food companies in one cluster, recording USD 54 billion in sales and offering 100,000 jobs. The scale of Korea's food industry is not as large yet. However, Korea's location adjacent to China, the conclusion of China-South Korea FTA, the public's distrust in foods made in Japan and China, and the growing interest in Korean pop culture (Korean Wave) are all working

The JoongAng Ilbo August 28, 2014

Iksan - Mouthwateringly Attractive 99 Food Companies from Korea and Beyond Are Flocking to the City

The Korean government is planning to step up its effort to expand export of agricultural products with demand for safe food drastically increasing among Chinese consumers. Foods made in Korea are considered safe and reliable in China, and an increasing number of international food companies are seeking to take advantage of this trend. Seven Singaporean companies including CHC, Tai Hua, and Chye Choon have concluded an MOU to move into the Korea National Food Cluster being constructed in Iksan, Jeollabuk-do. (omitted). (These companies) said, "There is no reason to operate a production plant in China where wage hikes have become an issue when we can take advantage of Korea's brand power, reduce costs for transportation, and benefit from lower tariff thanks to FTAs in Korea." The Korean government expects that products manufactured by international companies can also be distributed to the domestic market and this will expand the scope of choice for Korean consumers and lead to improved quality and decreased prices.

The Segye Times June 10, 2014

A Singaporean Mini-Cluster Is to Be Created within the Korea National Food Cluster in Iksan

The Ministry of Agriculture, Food and Rural Affairs announced that it concluded MOUs with eight Singaporean companies (including CHC, Tai Hua, and Chye Choon) for moving into the Korea National Food Cluster (FOODPOLIS) on July 10th at Seoul Grand Intercontinental Hotel. The Ministry stated that these leading food companies of Singapore have chosen the Korea National Food Cluster because it was deemed most appropriate due to Korea's strong brand credibility and the cluster's strategic position as an advance base for the Northeast Asian food market. The Singaporean companies are expected to cooperate closely and expand exchange with other food companies once they move into the cluster equipped with a wide range of R&D, logistics, and workforce support programs. Director General Yoon Dong-jin of the Ministry said, "Food companies from Singapore and Canada are planning to build and operate food processing facilities and functional food research institutes by hiring high-caliber workforce of Korea. The MOUs concluded with the Singaporean companies are expected to contribute significantly to bolstering investments into the Korea National Food Cluster."

※ The above are excerpts from news articles published in Edaily (June 30, 2014), Maeil Business Newspaper (September 15, 2013), The Munhwa Ilbo (January 27, 2014), The JoongAng Ilbo (August 28, 2014), and The Segye Times (July 10, 2014).

The Korea National Food Cluster is designed to accommodate 70-100 food companies and food research institutes and serve as the platform of the food industry and food culture. It spans 2.32 million square meters, nearly the size of Yeouido. It is expected to grow into a globally acclaimed hub of the food industry and is prepared to help its partners stay ahead of the competition and to steer them towards a brighter future. Many discerning companies from Asia and Europe have already recognized its potential and decided to join in.

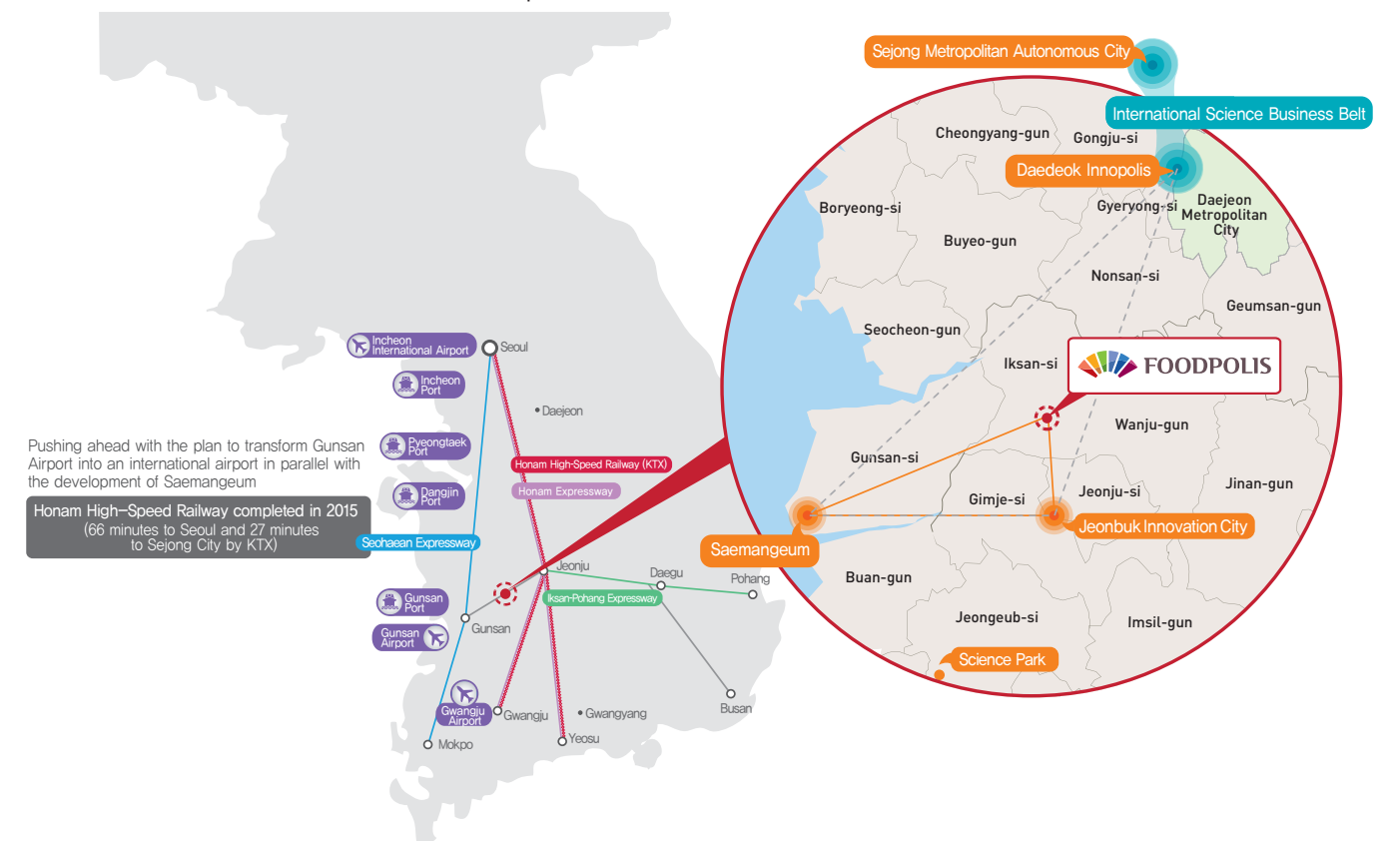


※ The above images are intended for reference only.



The Korea National Food Cluster will serve as a **global platform of the food industry** and food culture.

The Korea National Food Cluster is an R&D-centered, export-oriented industrial complex dedicated to the food industry, which is being constructed in Iksan, Jeollabuk-do, with support from the Ministry of Agriculture, Food and Rural Affairs, Jeollabuk-do, and Iksan-si and is scheduled to be completed in 2016. It will be equipped with a world-class R&D center, operate a wide range of supporting facilities and programs (across all pertaining processes from manufacturing to marketing and distribution), and offer diverse incentives in order to help food companies from Korea and beyond create greater added value and continue to evolve in an optimal business environment.



City of Logistics and Export

- Establishing a low-cost, high-efficiency logistics system by selecting a partner logistics company to better support resident companies
- Providing services optimized for exporters by setting up an integrated support office for quarantine, investigations, and customs clearance

City Boasting a Rich Pool of Food Industry Experts

- Building an efficient pairing system for food companies and job seekers
- Fostering food specialists through joint academic-industrial-research projects and internship programs
- Nurturing a trained workforce for food companies through the operation of a food academy

City Equipped with an Expansive R&D Network

- Serving as the nation's center of food-related R&D
- Bringing together Daedeok Innopolis, government agencies in Sejong City, Saemangeum, six government-run research institutes in Jeonbuk Innovation City, and renowned overseas food research institutes

City Ensuring the Happiness of Its Residents

- Creating a forward-looking, eco-friendly living environment reflective of the city's identity as the hub of the food industry (Townhouses, detached houses, hanok village, apartment complexes, etc.)
- Creating a special district dedicated to the exploration of food and culture

Korea
National Food
Cluster

The six supporting facilities of the Korea National Food Cluster remain dedicated to offering optimized services for partner companies across all processes, from R&D to sales and export.

SIX SUPPORTING FACILITIES



6 Supporting Facilities

Enjoy **the premium benefits** designed exclusively for the Korea National Food Cluster's resident companies.

Resident companies of the Korea National Food Cluster are fully supported by its three research centers (Functional Food Evaluation Center, Food Packaging Center, and Food Quality and Safety Center), the Pilot Plant, the Food Venture Center, and the Agency for the Korea National Food Cluster and receive carefully designed assistance across all fields, from food technology development to export.



1 Food Quality and Safety Center

- Conducting the nine legally required food hygiene tests as well as analysis and testing for five special areas
- Providing support to improve and maintain the flavor, scent, and other aspects of food to match global standards



2 Functional Food Evaluation Center

- Providing support for functional food evaluations to expedite the approval process for functional food ingredients (and products)
- Providing one-stop service for the functional food evaluation process of resident companies



3 Food Packaging Center

- Conducting R&D projects tailored to meet the individual needs of resident companies
- Performing food packaging analysis and testing commissioned by companies in a prompt, efficient manner
- Providing education and training, consulting service, opportunities for technological exchange, and pertinent information



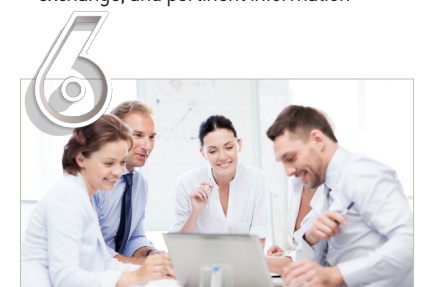
4 Pilot Plant

- Realizing the establishment of a world-class pilot plant
- Enabling support for the production of test products, small-quantity production, and commissioned processing
- Providing specialized facilities for functional foods and cutting-edge products



5 Food Venture Center

- Operating a state-of-the-art technology-based food venture center (rental factory)
- Supporting companies that are employing leading-edge convergence technology for functional and fermented foods and biofoods



6 Agency for the Korea National Food Cluster

- Providing one-stop, comprehensive support for resident companies to advance into the world
- Operating an industrial-academic-research community and seeking the co-prosperity of the food and agriculture/fisheries industries
- Establishing advanced industrial infrastructure focused on serving resident companies



10 SUPPORT SYSTEMS FOR RESIDENT COMPANIES

The Korea National Food Cluster provides complete support for your company through its systematic and strategic system designed to raise the value and competitive edge of your products.



※ The above image is intended for reference only.



10 Support Systems for Resident Companies

The Korea National Food Cluster guides your company along the path to success with its **well-organized system**.

Experience the diverse support programs offered by the Korea National Food Cluster, which range from R&D support for the development of high-added-value functional products to workforce support and export support, to help resident companies evolve into top-tier global corporations.



■ ■ ■ Providing High-Caliber Professionals for and Reinforcing the Competence of the Workforce at Food Companies

- Helping resident companies cultivate their workforce and pairing them with much-needed professionals
Fostering and supplying the professionals required by food companies
- Easing the managerial burden of food companies and operating a company-job seeker pairing system
Procuring ingredients and providing marketing and consulting services

■ ■ ■ Building an Advance Base for Food Export

- Transforming the cluster into a global food processing and trading base
Setting up and operating an integrated support office for quarantine, inspections, and customs clearance
- Providing support for food companies pioneering new export channels
Providing export-related information, consulting service for pertinent difficulties, and support for quarantine, inspections, and customs clearance
- Establishing a logistics support system for resident companies
Selecting a major logistics company dedicated to serving resident companies / Taking advantage of Gunsan Port and Gunsan Airport as the gateways



■ ■ ■ Conducting R&D to Pioneer High-Added-Value Products and Building a Network

- Providing support for R&D projects aimed at yielding high-added-value products
Focusing resources on nurturing food technology for functional foods, biofoods, etc.
- Developing and cultivating functional foods
Providing support for functionality and stability evaluations of functional foods
- Establishing a network encompassing corporations, academic organizations, and research institutes both in Korea and beyond
Ensuring the active operation of the resident company council, a mini cluster, and the industrial-academic-research network



■ ■ ■ Ensuring the Co-Prosperity of Agriculture/ Fisheries and the Food Industries

- Creating a system aimed at achieving the sustained co-prosperity of agriculture/fisheries and the food industries
Pairing food companies with local producers / Uncovering agricultural products that can be high-added-value ingredients
- Fostering the food industry into a 6th industry by connecting it with tourism
Transforming food manufacturing facilities into sites for field trips and hands-on experience and drawing tourists by joining hands with local festivals



SPECIAL INCENTIVE



Reduced burden for CEOs and
boosted morale for employees

※The above image is intended for reference only.



Incentives
Tailored for
the Individual
Needs of
Businesses

The Korea National Food Cluster offers a **wide range** of **tax benefits**, effective financial aid packages, and a **pleasant living environment**.

The Korea National Food Cluster is equipped with diverse incentives that fully reflect the individual needs of its resident companies. They are designed to benefit resident companies by reducing the costs incurred by new investments and relocation as well as R&D and personnel management costs, thereby improving productivity and product value.

- 1 **Various Tax Benefits**
National Taxes : Corporate tax and income tax exempted 100% for the first 5 years and 50% for the next 2 years
※ For companies that relocate to a non-overpopulation control area from an overpopulation control area.
Local Taxes : Acquisition tax exempted 100% and property tax exempted 100% for the first 5 years and 50% for the next 3 years
※ For companies that relocate to a non-overpopulation control area from an overpopulation control area
- 2 **Various Financial Aid Programs for Investment, Employment, and Education**
Qualification: Companies must show proof of actively seeking investment opportunities in Korea, such as MOUs with local government bodies, and must have maintained their operations in Korea for 3 years or longer.

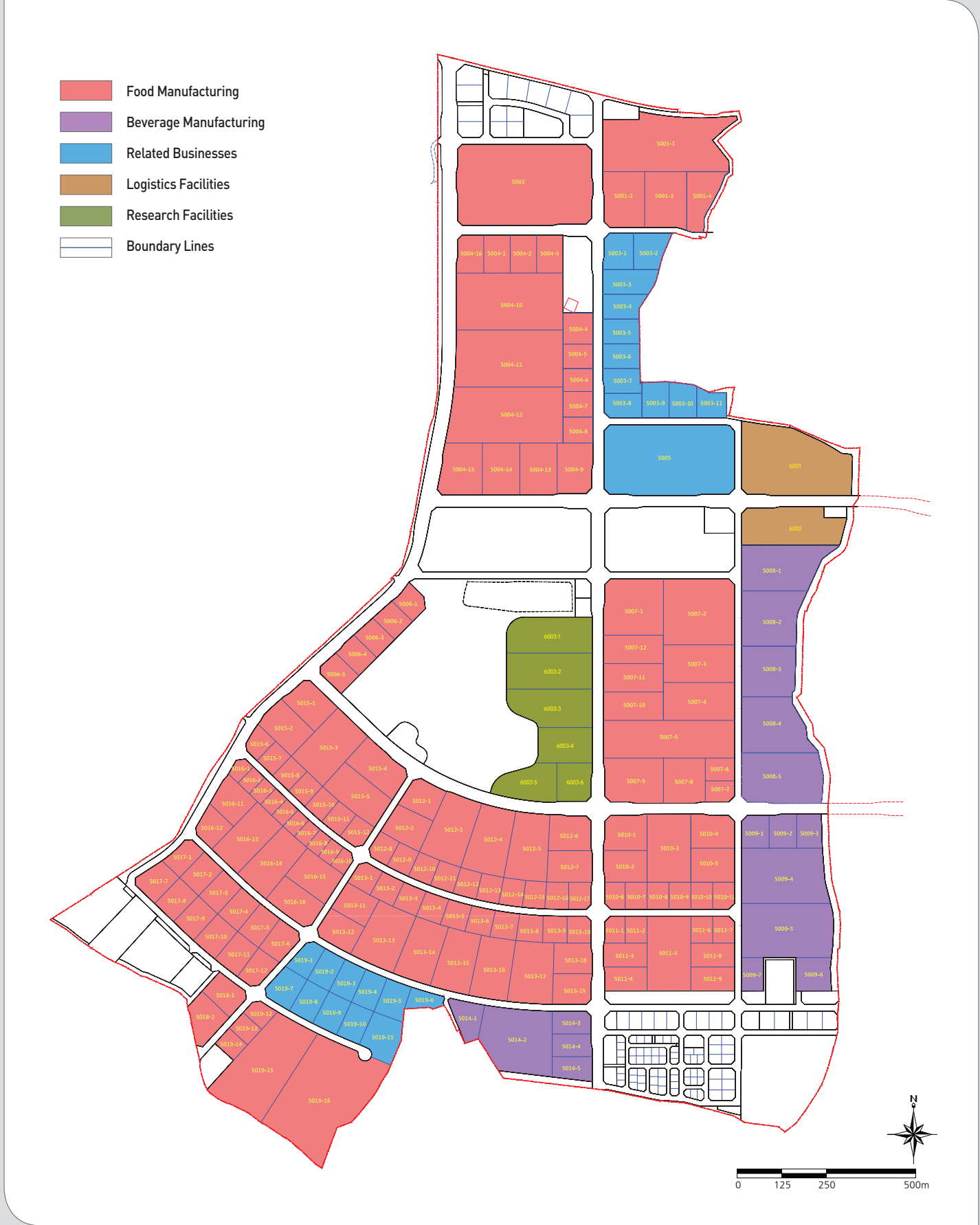
Classification		Details
Investment subsidy	Large-scale investment ¹⁾	Jeollabuk-do Up to 10% of the invested amount, which exceeds KRW 1 billion, with a ceiling of KRW 10 billion Iksan-si Up to 5% of the invested amount, with a ceiling of KRW 10 billion
	General investment ²⁾	Jeollabuk-do Up to 10% of the invested amount, which exceeds KRW 1 billion, with a ceiling of KRW 5 billion Iksan-si Up to 5% of the invested amount, which exceeds KRW 1 billion, with a ceiling of KRW 5 billion
Employment subsidy	Jeollabuk-do	If the number of full-time employees exceeds 20, KRW 1 million per head for all excess employees will be provided on a monthly basis for up to 6 months with a ceiling of KRW 1 billion per company.
	Iksan-si	If the number of full-time employees exceeds 20, KRW 500,000 per head for all excess employees will be provided on a monthly basis for up to 6 months with a ceiling of KRW 200 million per company.
Education and training subsidy	Jeollabuk-do	If the number of full-time employees exceeds 20 by newly hiring local residents, up to KRW 500,000 per head for all excess employees will be provided for up to 6 months with a ceiling of KRW 500 million per company.
	Iksan-si	If the number of full-time employees exceeds 20 by newly hiring local residents, up to KRW 500,000 per head for all excess employees will be provided for up to 6 months with a ceiling of KRW 200 million per company.
Settlement subsidy	Jeollabuk-do	KRW 100,000 per month per head up to 1 year (for large-scale investment)
Support for SMEs		Facilities and working funds from Jeollabuk-do and market pioneering expenses and marketing expenses from Iksan-si

1) Applies to companies with a combined amount of investment reaching KRW 100 billion or more or with 300 or more full-time employees
2) Applies to companies that have invested in Jeollabuk-do or Iksan-si and have 20 or more full-time employees

- 3 **Support Measures for Resident Companies**
 - Streamlining customs clearance procedures
 - Giving priority for the use of the 6 H/W facilities
 - Offering the 10 carefully designed support programs for resident companies
 - Providing one-stop service encompassing all administrative procedures pertaining to investment, legal affairs, and move-in into the cluster by pairing a manager with each investor (Agency for the Korea National Food Cluster and local government bodies)
 - Resolving any administrative inconveniences incurred by the construction of a production plant
- 4 **Provision of Optimal Residential Conditions**
 - Creating a forward-looking, eco-friendly living environment reflective of the city's identity as the hub of the food industry
 - Townhouses, detached houses, hanok village, apartment complexes, etc.
 - Offering world-class education by establishing international schools, etc.
 - Creating a special district dedicated to the exploration of food and culture.
 - Establishing an expansive metropolitan transportation network and environment-conscious public transit system.
 - Designing an eco-friendly, unpolluted city that is pleasant to live in.



Map of Lots Allocated to Different Industries



Lots for Sale For Food Manufacturers



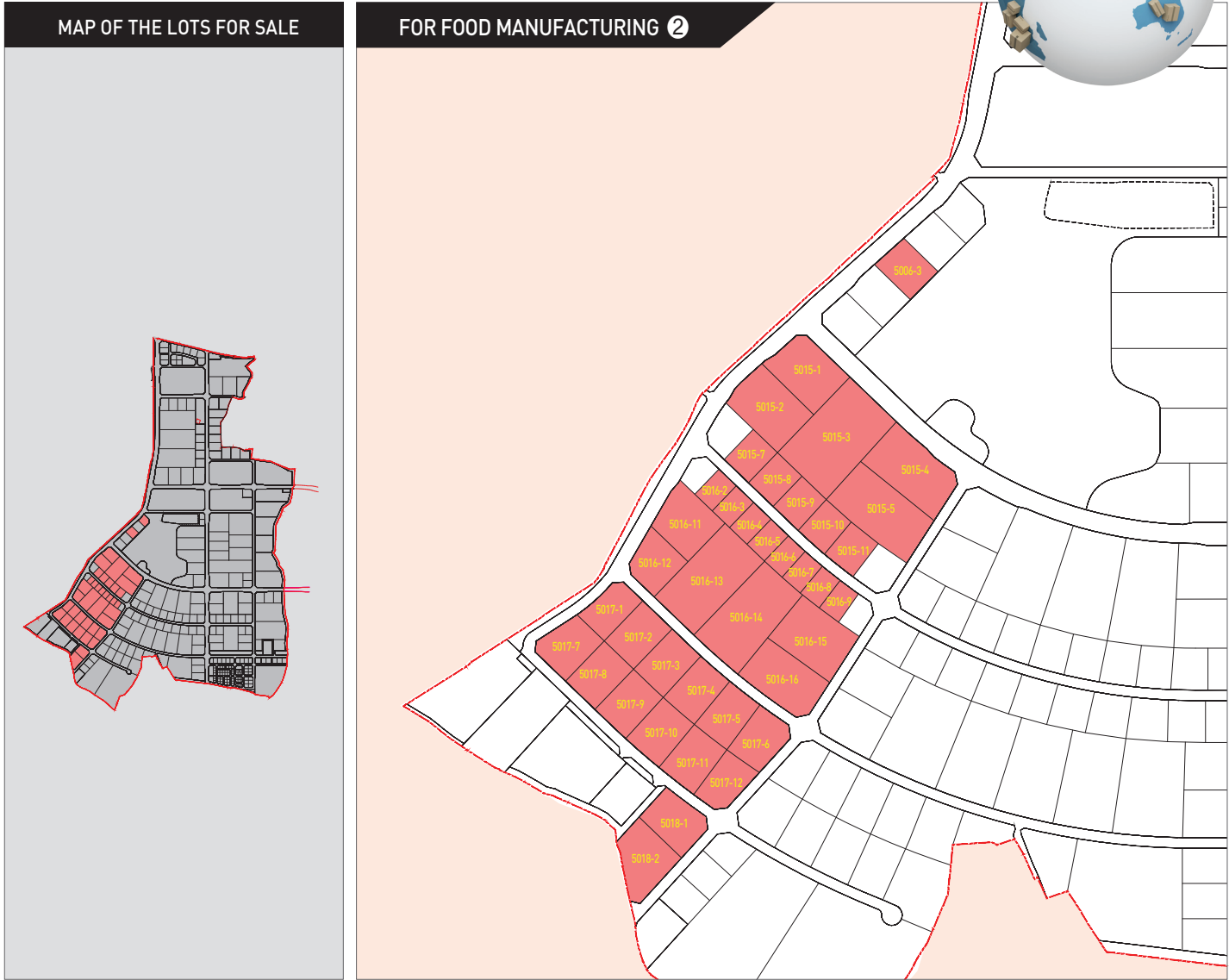
KOREA NATIONAL FOOD CLUSTER
THE ONE AND ONLY

1st Round of Sales

Serial number	Temporary lot number	Area(m ²)	Area(3.3m ²)
1	5001-1	32,849	9,937
2	5001-3	11,688	3,536
3	5001-4	7,970	2,411
4	5004-2	4,979	1,506
5	5004-6	3,405	1,030
6	5004-10	30,043	9,088
7	5004-11	30,334	9,176
8	5004-12	31,282	9,463

※ This map is intended for reference only. Please note that the actual location, area, and shape of each lot may differ.

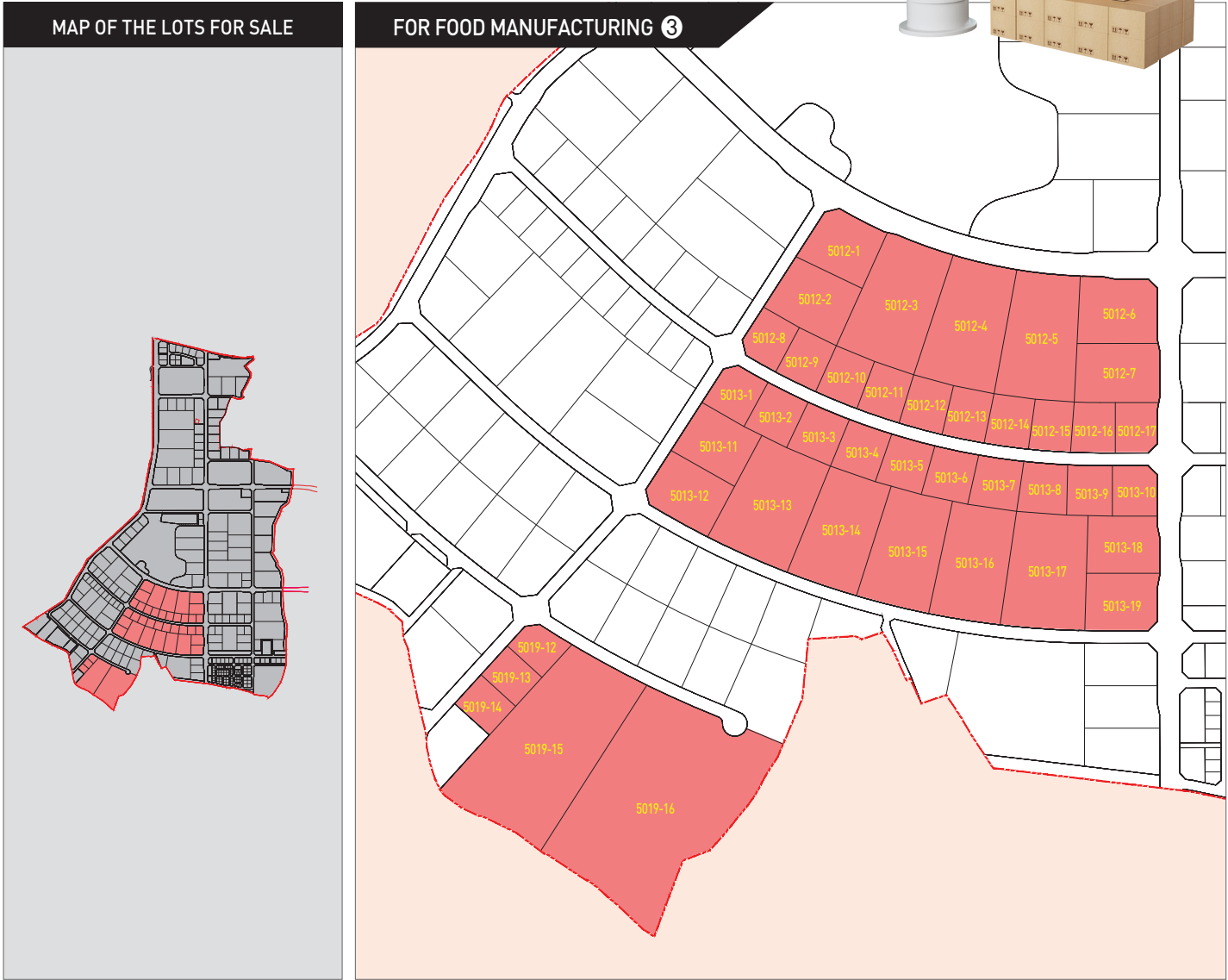
Lots for Sale
For Food Manufacturers



3rd Round of Sales

Serial number	Temporary lot number	Area(㎡)	Area(33㎡)	Serial number	Temporary lot number	Area(㎡)	Area(33㎡)	Serial number	Temporary lot number	Area(㎡)	Area(33㎡)	Serial number	Temporary lot number	Area(㎡)	Area(33㎡)
9	5006-3	3,985	1,205	19	5015-11	3,064	927	29	5016-12	4,518	1,367	39	5017-6	4,788	1,448
10	5015-1	7,330	2,217	20	5016-2	1,725	522	30	5016-13	11,527	3,487	40	5017-7	5,014	1,517
11	5015-2	8,008	2,422	21	5016-3	1,725	522	31	5016-14	11,545	3,492	41	5017-8	4,668	1,412
12	5015-3	14,193	4,293	22	5016-4	1,725	522	32	5016-15	8,220	2,487	42	5017-9	4,774	1,444
13	5015-4	9,415	2,848	23	5016-5	1,723	521	33	5016-16	7,723	2,336	43	5017-10	4,887	1,478
14	5015-5	10,574	3,199	24	5016-6	1,670	505	34	5017-1	3,951	1,195	44	5017-11	4,887	1,478
15	5015-7	2,889	874	25	5016-7	1,666	504	35	5017-2	4,668	1,412	45	5017-12	4,154	1,257
16	5015-8	2,938	889	26	5016-8	1,665	504	36	5017-3	4,612	1,395	46	5018-1	5,260	1,591
17	5015-9	2,936	888	27	5016-9	1,662	503	37	5017-4	4,553	1,377	47	5018-2	6,302	1,906
18	5015-10	2,975	900	28	5016-11	6,327	1,914	38	5017-5	4,553	1,377				

※This map is intended for reference only. Please note that the actual location, area, and shape of each lot may differ.

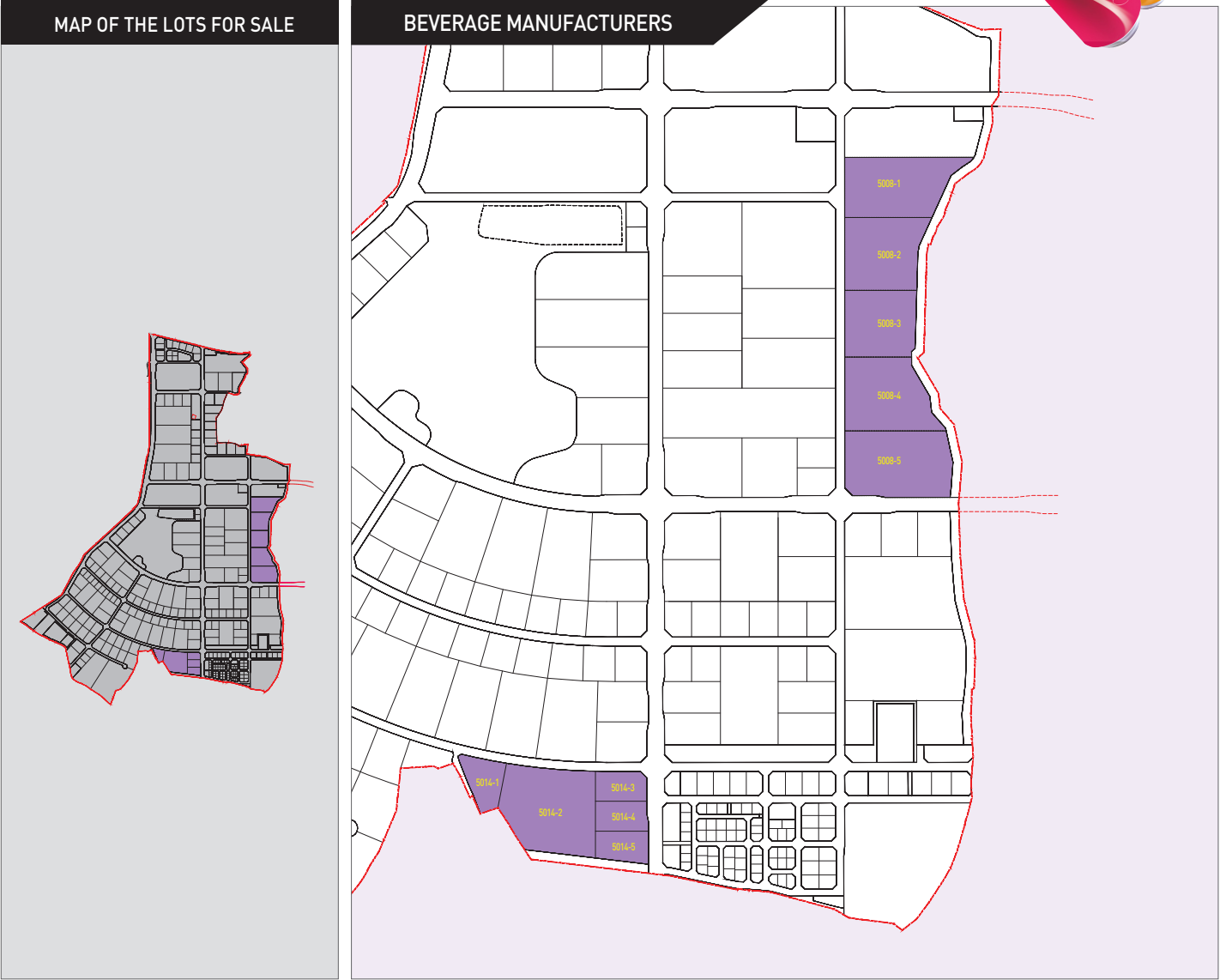


4th Round of Sales(Scheduled)

Serial number	Temporary lot number	Area(㎡)	Area(33㎡)	Serial number	Temporary lot number	Area(㎡)	Area(33㎡)	Serial number	Temporary lot number	Area(㎡)	Area(33㎡)	Serial number	Temporary lot number	Area(㎡)	Area(33㎡)
48	5012-1	5,911	1,788	59	5012-12	3,079	931	70	5013-6	3,280	992	81	5013-17	12,755	3,858
49	5012-2	6,835	2,068	60	5012-13	3,022	914	71	5013-7	3,379	1,022	82	5013-18	5,831	1,764
50	5012-3	13,539	4,096	61	5012-14	3,096	937	72	5013-8	3,340	1,010	83	5013-19	5,801	1,755
51	5012-4	13,188	3,989	62	5012-15	2,916	882	73	5013-9	3,217	973	84	5019-12	2,596	785
52	5012-5	12,878	3,896	63	5012-16	3,067	928	74	5013-10	3,141	950	85	5019-13	2,595	785
53	5012-6	7,221	2,184	64	5012-17	2,945	891	75	5013-11	5,712	1,728	86	5019-14	2,595	785
54	5012-7	7,017	2,123	65	5013-1	3,234	978	76	5013-12	6,107	1,847	87	5019-15	27,986	8,466
55	5012-8	3,024	915	66	5013-2	3,280	992	77	5013-13	13,199	3,993	88	5019-16	41,887	12,671
56	5012-9	3,079	931	67	5013-3	3,280	992	78	5013-14	11,171	3,379				
57	5012-10	3,079	931	68	5013-4	3,280	992	79	5013-15	11,200	3,388				
58	5012-11	3,079	931	69	5013-5	3,280	992	80	5013-16	11,183	3,383				

※This map is intended for reference only. Please note that the actual location, area, and shape of each lot may differ.

Lots for Sale
For Beverage Manufacturers

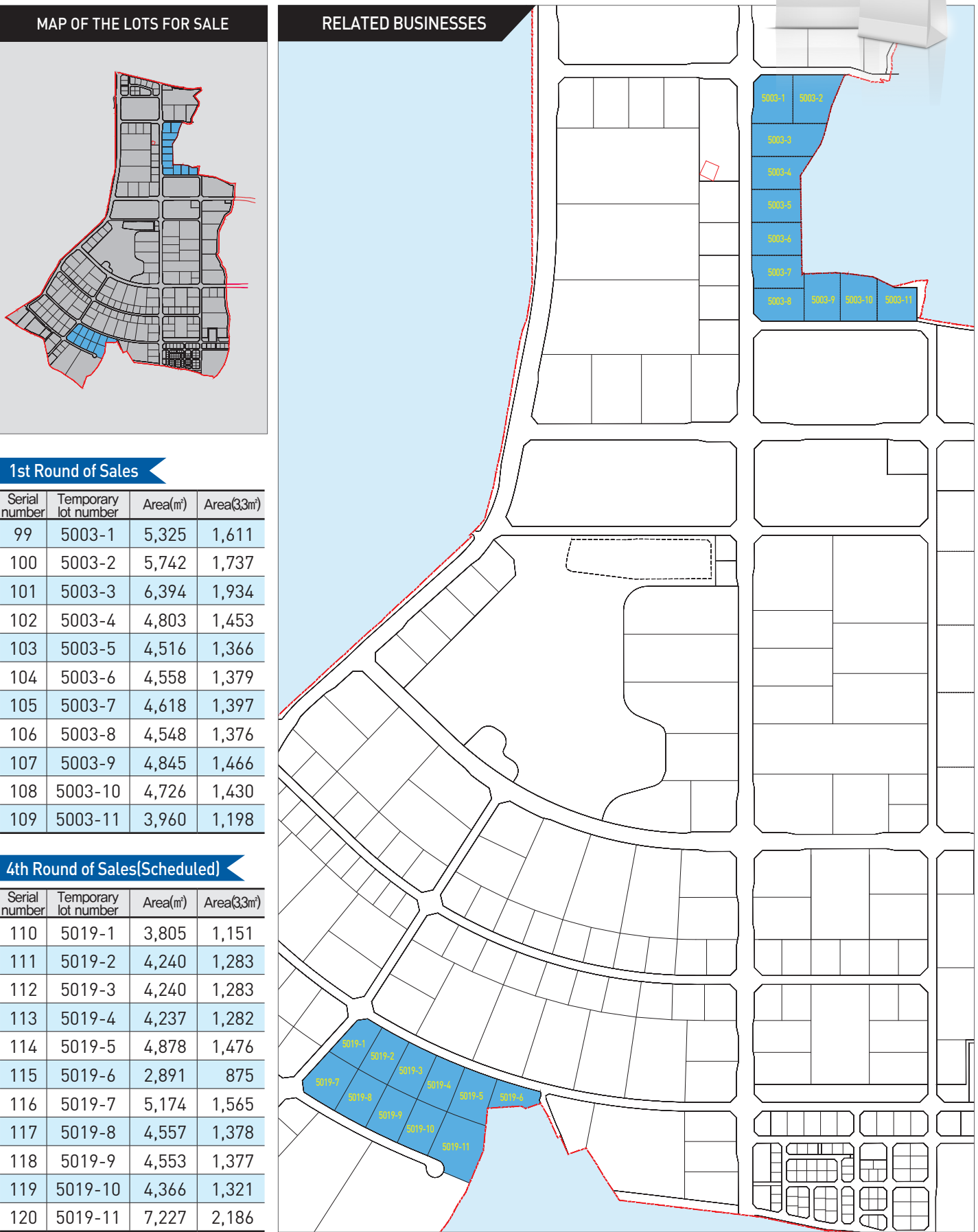


※This map is intended for reference only. Please note that the actual location, area, and shape of each lot may differ.

3rd Round of Sales			
Serial number	Temporary lot number	Area(m ²)	Area(33m ²)
89	5008-1	17,672	5,346
90	5008-2	15,755	4,766
91	5008-3	13,439	4,065
92	5008-4	17,245	5,217
93	5008-5	19,773	5,981

4th Round of Sales(Scheduled)			
Serial number	Temporary lot number	Area(m ²)	Area(33m ²)
94	5014-1	4,986	1,508
95	5014-2	21,394	6,472
96	5014-3	4,311	1,304
97	5014-4	4,449	1,346
98	5014-5	4,523	1,368

Lots for Sale
For Related Businesses

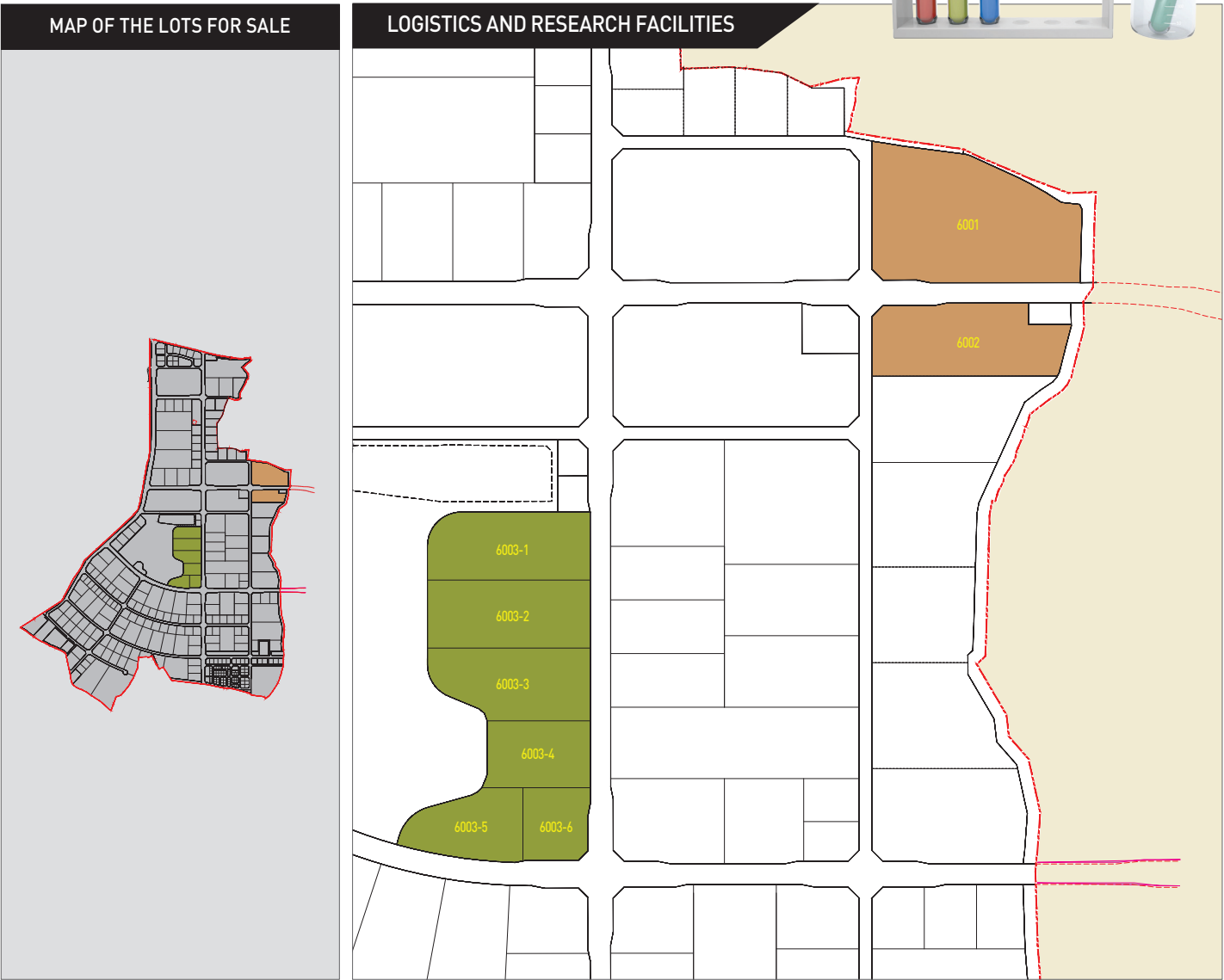


1st Round of Sales			
Serial number	Temporary lot number	Area(m ²)	Area(33m ²)
99	5003-1	5,325	1,611
100	5003-2	5,742	1,737
101	5003-3	6,394	1,934
102	5003-4	4,803	1,453
103	5003-5	4,516	1,366
104	5003-6	4,558	1,379
105	5003-7	4,618	1,397
106	5003-8	4,548	1,376
107	5003-9	4,845	1,466
108	5003-10	4,726	1,430
109	5003-11	3,960	1,198

4th Round of Sales(Scheduled)			
Serial number	Temporary lot number	Area(m ²)	Area(33m ²)
110	5019-1	3,805	1,151
111	5019-2	4,240	1,283
112	5019-3	4,240	1,283
113	5019-4	4,237	1,282
114	5019-5	4,878	1,476
115	5019-6	2,891	875
116	5019-7	5,174	1,565
117	5019-8	4,557	1,378
118	5019-9	4,553	1,377
119	5019-10	4,366	1,321
120	5019-11	7,227	2,186

※This map is intended for reference only. Please note that the actual location, area, and shape of each lot may differ.

Lots for Sale
For Logistics and Research Facilities



3rd Round of Sales			
Serial number	Temporary lot number	Area(m ²)	Area(3,3m ²)
121	6001	33,414	10,108
122	6002	18,129	5,484
123	6003-1	14,968	4,528
124	6003-2	15,310	4,631
125	6003-3	14,542	4,399
126	6003-4	9,591	2,901
127	6003-5	9,755	2,951
128	6003-6	6,505	1,968



※This map is intended for reference only. Please note that the actual location, area, and shape of each lot may differ.



Join the Korea National Food Cluster
and take part in its vision of rising as
the hub of the global food market.

The cluster will remain by your side throughout your
journey towards becoming a renowned food company,
not only in Northeast Asia but also around the world.

